

# Your Japan #55

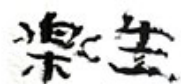
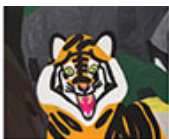
An Online Newsletter Showcasing Our Programs for the Month of November, 2023!

Time flies as October is behind us and we are now into November and the start of the holiday season including Thanksgiving, Christmas, and New Year (Shogatsu).

For the upcoming month, we have several events lined up in addition to our ongoing art exhibition titled Expressions of Life: The World of Self-Taught Artists With Disabilities. First off, we are welcoming back Marty Friedman for an in person lecture on Japan through the eyes of an American Rockstar. A second lecture about the safety of Japanese train cars will be held at Japan House, Los Angeles in Hollywood and Highland mall. Finally, we will be hosting two online lectures, one covering Furikake in support of Table for Two USA's Onigiri Action campaign and a second on Yokai or supernatural beings in Japan.

Make sure to scroll to the bottom to read our announcements regarding Japanese-language Education!

We have many events for the coming month so we hope you will join us for one of our events either at our office, at our partner organizations or online!



## ART EXHIBITION

### EXPRESSIONS OF LIFE: THE WORLD OF SELF-TAUGHT ARTISTS WITH DISABILITIES

September 26th to December 16th 2023

Hours: Mon-Sat 12:00PM-6:00PM

Closed: Sundays and Holidays (11/10, 11/11,  
11/23, 11/24)

Venue: JFLA

-Admission Free

In commemorating the 40th anniversary of its operation, the Japan Foundation, Los Angeles proudly presents the art exhibition titled Expression of Life: The World of Self-Taught Artists with Disabilities. This exhibition features over 35 vibrant artworks from Katayama Studio's collection. It is one of the earliest art studios in Japan dedicated to supporting self-expression and art activities for

individuals with disabilities. The studio has been doing so for two decades.

Featuring 12 artists' work, ranging from calligraphy to oil painting, we hope these free-flowing and lively art pieces will convey diverse perspectives on creativity and life.

[Read More >](#)

---



#### **ONLINE LECTURE**

#### **FURIKAKE:**

#### **Healthy Savory Sprinkles**

**Thursday, November 2nd @7PM**

Venue: JFLA

**-Admission Free, [RSVP REQUIRED](#)**

We are excited to team up with TABLE FOR TWO USA once again and host a fun and educational online program to support their 9th annual Onigiri Action campaign on Thursday, November 2nd.

This year, we will focus on furikake, a Japanese seasoning that typically contains savory ingredients such as dried fish flakes, seaweed, vegetables, and sesame seeds. It is a popular condiment that is commonly sprinkled on cooked rice and onigiri for added flavor and nourishment.

[Read More >](#)

---



#### **ARTIST TALK**

#### **MARTY RETURNS!**

**Ask Marty Vol. 2: An Insider's View of Japan Through the Eyes of an American Rockstar**

**Thursday, November 9th @7PM**

Venue: JFLA

**-Admission Free, [RSVP REQUIRED](#)**

He is coming back to JFLA for the third time!

[Read More >](#)

---



**LECTURE SERIES**  
**SECRETS REVEALED:**  
**Safety and Accuracy of Japan's**  
**Railways & Travel Attractions in**  
**Eastern Japan**  
**Tuesday, November 14th @7PM**  
**(Doors Open & Cocktail Time @6:30PM)**  
Venue: Japan House, Los Angeles  
**-Admission Free, RSVP REQUIRED (Check**  
**Our Website for More Info!)**

Two active train operators will share the secrets of Japanese train safety and accuracy live online from Japan. This lecture shows how the operators on the forefront of train operations are trained and their craftsmanship ensures train safety and accuracy. In the second half of the lecture, a travel expert from JNTO will explain the sights and attractions of eastern Japan in the coming season. In addition, enjoy sake and seafoods tastings from Eastern Japan.



**MINI ONLINE LECTURE SERIES 1**  
**YOKAI: AN INTRODUCTION TO THE**  
**SUPERNATURAL BEINGS OF JAPAN**  
**Tuesday, November 21st @7PM**  
**-Admission Free, RSVP REQUIRED**

To the Japanese, yokai are mysterious phenomena and weird creatures that have inhabited the country's landscape, homes, folklore and imagination for many centuries. They can be evil or benign spirits, ranging from shape-shifting animals like foxes and badgers, who adopt human form to trick, bewitch or reward humans, to the vengeful ghosts of warriors killed in battle or women wronged by their

husbands. Yōkai can also be supernatural creatures from folklore like kappa (river imps that pull people and horses into the water), oni (demons that cause devastation, storms and plagues), and even objects like umbrellas and lanterns that mysteriously come to life.

[Read More >](#)



## THE JAPAN FOUNDATION PROGRAM GUIDELINES FOR FY2024

The Japan Foundation offers programs in Japanese language as well Arts & Culture. Please read below for information for each category.

### JAPANESE TRAINING PROGRAMS - NOW AVAILABLE!

#### ►TEACHER TRAINING PROGRAM (DEADLINE: 8:00PM PST, NOV. 29th)

The Japan Foundation Japanese-Language Institute, Urawa organizes training programs on Basic Training, Japanese Language, and Comprehensive Japanese Teaching Methods Program for Japanese-language teachers outside of Japan.

[More Information>](#)

#### ►JAPANESE LANGUAGE PROGRAM FOR SPECIALISTS IN CULTURAL & ACADEMIC FIELDS

(DEADLINE: 8:00PM PST, NOV. 29th)

This program provides specialists (Researchers, Postgraduate Students, Librarians, Museum Curators, etc.) who need a good command of Japanese language to conduct field work and research through an intensive residential training course on the Japanese language.

[More Information>](#)

### ARTS & CULTURE PROGRAMS - NOW AVAILABLE!

The Japan Foundation Los Angeles office (JFLA) accepts applications for projects that take place within the 13 states west of Rocky Mountains listed below for the JFLA Grant throughout the year. This grant aims to support projects that will enhance further understanding of Japanese arts and culture.

Click below to download the online application forms and guidelines.

#### ►EXHIBITIONS ABROAD SUPPORT PROGRAM

(DEADLINE: 8:00PM PST, NOV. 29th)

This program is designed to provide financial support for museums and art institutions overseas that organize exhibitions introducing Japanese art and culture to audiences

overseas. In addition, this program is designed to support overseas international exhibitions such as biennials/triennials introducing Japanese artists and their works.

[More Information>](#)

► **TRANSLATION AND PUBLICATION SUPPORT PROGRAM**

(DEADLINE: 8:00PM PST, NOV. 19th)

This program is designed to provide partial financial support for overseas publishers intending to translate and publish works originally written in Japanese. The program aims to foster better understanding of Japanese culture by encouraging overseas publishers to translate and publish Japanese works. The grant covers part of the translation and publishing costs (e.g., costs for paper, typesetting, platemaking, printing, and binding)

[More Information>](#)

► **ISHIBASHI/JAPAN FOUNDATION FELLOWSHIP FOR RESEARCH ON JAPANESE ART**

(DEADLINE: 8:00PM PST, NOV. 29th))

This program aims to support the development of professionals specializing in the study of Japanese visual arts by providing an opportunity for curators and researchers from abroad to conduct research in Japan, and by so doing, promote the study of the field and the introduction of Japanese art overseas.

[More Information>](#)



**2024 J-LEAP LEAD TEACHER APPLICATION HAS BEGUN!**  
**Part 1 Deadline: December 1ST, 2023**

Interested in a grant opportunity which brings an assistant teacher from Japan to help strengthen and enhance your K-12 Japanese language program? J-LEAP (Japanese-Language Education Assistant Program), co-administered by Laurasian Institution and Japan Foundation, is currently in its eleventh year and is now accepting applications from host schools for the 2024 cycle!

For the next three issues of Your Japan, we will be featuring reports from participants in this year's J-LEAP to tell you about their experiences assistant teaching at American schools. This month, we would like to welcome [Keita Niwayama](#), who is currently at Mid-Pacific Institute in Honolulu, HI, and [Rio Kimoto](#), who is currently at Palmer High School in Palmer, AK! You can read about their experiences at the link above.

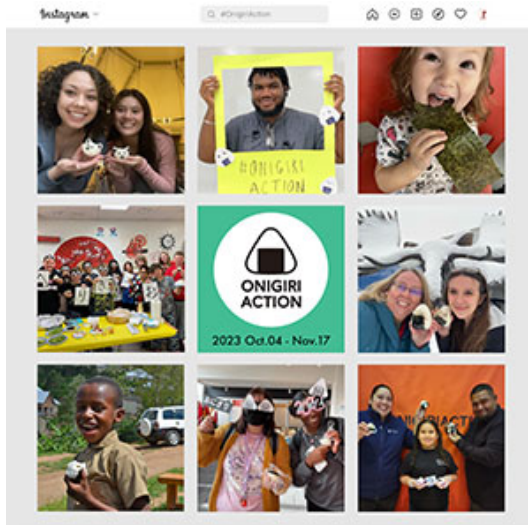
[Learn More >](#)



JF NIHONGO  
**2024 WINTER TERM**  
**Schedule Coming Soon!**

Let's learn Japanese together.  
We are not just a class. WE ARE  
COMMUNITY!

[Learn More >](#)



**TABLE FOR TWO Celebrates**  
**World Food Day 2023**  
**#OnigiriAction**

- Unite the States with Onigiri (Japanese Rice Balls) -  
Aims to Provide One Million Meals to  
Children in Need

TABLE FOR TWO USA (TFT) invites everyone to participate in their 9th Annual ONIGIRI ACTION campaign to provide 1 million school meals to children around the world from Wednesday, October 4 to Friday, November 17, 2023. During the campaign, through the generosity of our partner organizations, every rice ball related post on the campaign website or social media with #OnigiriAction will provide five school meals to children in need. TFT will enhance school meals in socioeconomically disadvantaged neighborhoods in the U.S. by adding fresh vegetables and fruits as well as provide school meals to children in East Africa.

[Read More >](#)

## Los Angeles Office Supported Events



**KAGURA:**  
**Diving tales From Japan**  
**Sunday, November 19th @2PM**  
**Venue: Aratani Theatre**  
**Tickets: Free**

Prepare to experience the magic of Hiroshima Kagura, a dynamic traditional performing art that combines dramatic storytelling, live music, dazzling costumes, high-energy dancing, and more!

[Learn More >](#)

継承日本語  
へようこそ!

# Welcome to Keisho Nihongo!

A platform designed to support guardians  
and educators of Japanese Heritage  
Language Learners in the U.S.

There are a variety of settings in which Japanese language for children with Japanese backgrounds (Japanese Heritage Learners) is taught and learned in the United States. These children may live in areas with little access to Japanese-language classes, much less ones with curricula tailored to their unique experiences and skillsets.

To help serve their needs, JFLA has launched [keishonihongo.org](https://www.keishonihongo.org), an online platform for parents and teachers of Japanese heritage language learners.

Keisho Nihongo pools from the knowledge of The Japan Foundation, Los Angeles, and the Keisho Nihongo Special Advisory Committee, consisting of three experts in the field of Japanese heritage language education. The site includes a nationwide map of heritage language programs, in addition to a curated list of educational materials and resources for teachers and guardians. There is also a community forum and a page highlighting exemplary heritage language programs.

**Keisho Nihongo** is available in both English and Japanese, so please visit today!

---

## General Invitation to Join JF USA Digital Library

Our digital library system in coordination with our New York and Toronto office is still going strong and we recently added more volume to popular books so there is less of a wait time. We have also been incrementally adding new books as well so make sure to sign up for an account below and also let your friends know about this free service.



Starting in 2023, we will be sending out updates once a week on Wednesdays by 6:30PM pacific time. If you register and do not receive a welcome email from us within a Wednesday of registering, please [contact us](#) so we can help you out. We hope you will enjoy this service from the Japan Foundation, Los Angeles!

[Click Here to Complete the Signup Survey](#) (If the link doesn't work check back later!)

---

# 2023-24 Japanese Language Grants in the United States

## 2023-2024 Japanese Language Grants Now Available!

### Grant for Nationwide/Statewide/Region-wide Projects for Teachers

#### *Japanese-Language Education Project Grant*

(Examples: Conferences/Seminars/Workshops for Teachers, Teaching Material Development, Research Projects, etc.)

**Deadline:** 2 months before the project start date

More info: <https://www.jflalc.org/grants-jle-project>

---

### Advocacy Support Letter

If your Japanese language program is in danger of being cut due to COVID-19, we will send a support letter to stakeholders (Superintendent, Principal, Dean, etc.).

[Please contact us for details!](#)

---

## Japanese Language Education Update 119

November is here and the big news related to Japanese-language education is that the ACTFL Annual Convention & World Languages Expo will be happening in Chicago from November 17th through the 19th. We will be hosting our own booth #4232 at McCormick Place West so make sure to drop by and pick up some Japan Foundation Goods.

We have also announced our J-LEAP application information for the 2024 school year so if you are interested in bringing in a native Japanese assistant teacher to help out in your classroom, make sure to apply by the deadline.

This is also the last month to apply for our training programs in Japan next year, so make sure to view our program guidelines above. There have been some changes to both programs including the reduction of the teacher training programs from four to three in our region as well as only one long term program for the training program for specialists. If you have any questions, please make sure to [contact us](#) and select "Anything Related to Japanese Language Education" from the drop down menu.

You can still order give away goods including posters so if you haven't ordered any from us in the past year, you can do so at the [following link](#). Posters do not count towards your limit so if you are interested in just receiving posters, you can do that as well.





